



Benchmark Example No. 36

Pushover Analysis: Performance Point Calculation by ATC-40 Procedure

VERiFiCATION
BE36 Pushover Analysis: Performance Point Calculation by ATC-40 Procedure

VERiFiCATION Manual, Service Pack 2022-12 Build 74

Copyright © 2023 by SOFiSTiK AG, Nuremberg, Germany.

SOFiSTiK AG

HQ Nuremberg
Flataustraße 14
90411 Nürnberg
Germany

T +49 (0)911 39901-0
F +49(0)911 397904

Office Garching
Parkring 2
85748 Garching bei München
Germany

T +49 (0)89 315878-0
F +49 (0)89 315878-23

info@sofistik.com
www.sofistik.com

This manual is protected by copyright laws. No part of it may be translated, copied or reproduced, in any form or by any means, without written permission from SOFiSTiK AG. SOFiSTiK reserves the right to modify or to release new editions of this manual.

The manual and the program have been thoroughly checked for errors. However, SOFiSTiK does not claim that either one is completely error free. Errors and omissions are corrected as soon as they are detected.

The user of the program is solely responsible for the applications. We strongly encourage the user to test the correctness of all calculations at least by random sampling.

Front Cover

Arnulfsteg, Munich Photo: Hans Gössing

Overview

Element Type(s):

Analysis Type(s):

Procedure(s):

Topic(s): EQKE

Module(s): SOFILOAD

Input file(s): [pushover-pp-atc.dat](#)

1 Problem Description

The following example is intended to verify the ATC-40 procedure for the calculation of the performance point (illustrated schematically in Fig. 1), as implemented in SOFiSTiK. The elastic demand and capacity diagrams are assumed to be known.

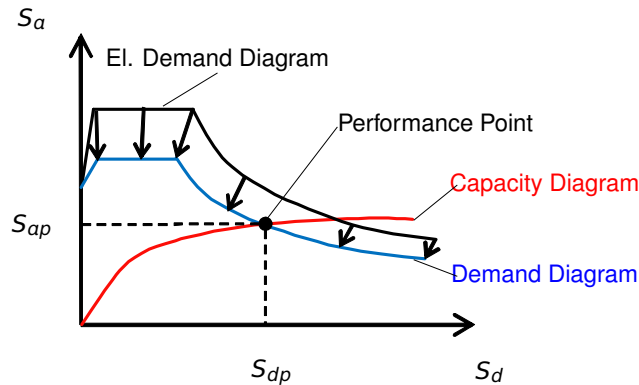


Figure 1: Determination of the performance point $PP (S_{dp}, S_{ap})$

2 Reference Solution

The reference solution is provided in [1], 8.3.3.3 "Performance Point Calculation by Capacity Spectrum Method - Procedure A".

Assuming that the elastic demand diagram (5% elastic response spectrum in ADRS format¹) and the capacity diagram are known, it is possible to determine the performance point $PP (S_{dp}, S_{ap})$ (Fig. 1). The procedure comprises of a series of trial calculations (trial performance points $PP_t (S_{dp,t}, S_{ap,t})$), in which the equivalent *inelastic* single degree of freedom system (SDOF), represented by the capacity diagram, is transformed to an equivalent *elastic* SDOF system whose response in form of the performance point PP is then calculated from the reduced elastic response spectrum (demand diagram). The computation stops when the performance point PP is within a tolerance of a trial performance point PP_t . The ATC-40 Procedure A is a semi-analytical procedure since it involves graphical bilinear idealization of the capacity diagram. Detailed description of this step-by-step procedure can be found in [1].

3 Model and Results

In order to verify the analysis procedure for the determination of the performance point, a test case has been set up in such a way that it comprises of a SDOF with a unit mass and a non-linear spring element. It is obvious that for such an element the quantities governing the transformation from the original system

¹ADRS = Spectral Acceleration S_a - Spectral Displacement S_d format

to the equivalent inelastic SDOF system must be equal to one, i.e.

$$\phi_{cnod} = 1 \quad ; \quad \Gamma = 1 \quad ; \quad m = 1 \quad , \quad (1)$$

where ϕ_{cnod} is the eigenvector value at control node, Γ is the modal participation factor and m is the generalized modal mass. Writing now the equations which govern the conversion of the pushover curve to capacity diagram, we obtain [2]

$$S_d = \frac{u_{cnod}}{\phi_{cnod} \cdot \Gamma} = u_{cnod} \quad , \quad (2a)$$

$$S_a = \frac{V_b}{\Gamma^2 \cdot m} = V_b \quad , \quad (2b)$$

where V_b is the base shear and u_{cnod} is the control node displacement.

Since the original system is a SDOF system, V_b and u_{cnod} are nothing else but the force in spring P and the displacement of the unit mass u , respectively. It follows further that the force-displacement work law assigned to the spring element corresponds to the capacity diagram in ADRS format, with the force P and displacement u equal to S_a and S_d , respectively.

The capacity diagram used in the reference example is defined by four points, whose coordinates are listed in the Table 1. According to the analysis above, these points can be used to define the force-displacement work law $P - u$ of the non-linear spring element (Fig.2).

Table 1: Model Properties [1]

Capacity Diagram		Elastic Demand
Point	$(S_d[mm], S_a[m/s^2])$	UBC 5% Elastic Response Spectrum.
A	(48.77, 2.49)	Seismic Zone 4, ZEN = 0.40.
B	(71.37, 3.03)	No near-fault effects.
C	(96.01, 3.39)	Soil Profile:
D	(199.14, 3.73)	- Type S_B : $C_A = 0.40, C_V = 0.40$ - Type S_D : $C_A = 0.44, C_V = 0.64$

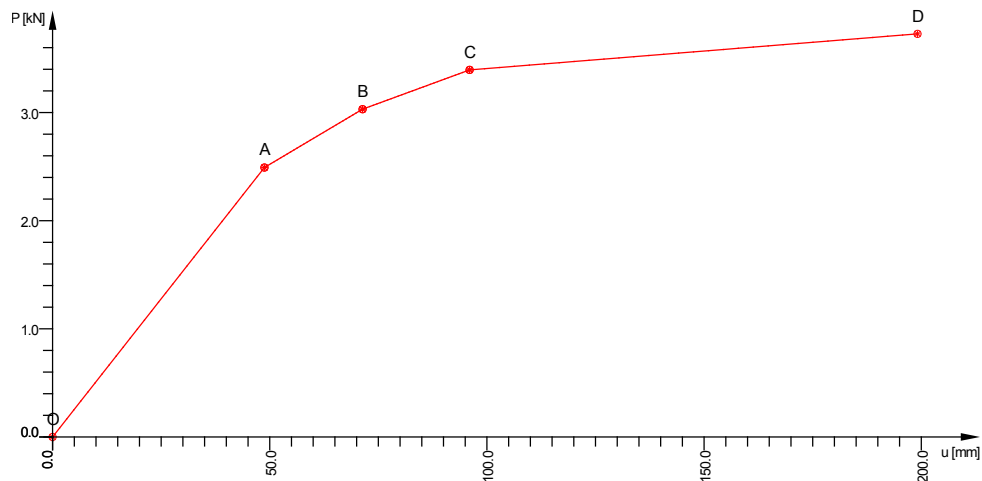


Figure 2: Force-displacement work law of the non-linear spring

The elastic demand is an UBC 5% damped elastic response spectrum, whose properties are summarized in Table 1. Two soil profile types are considered - soil profile type S_B and S_D .

The outcome of the analysis is shown in Figures 3 and 4.

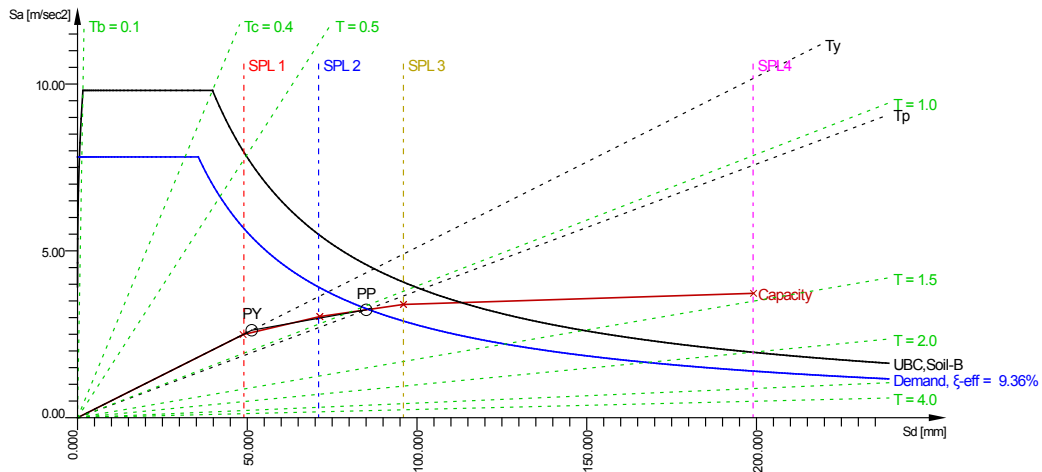


Figure 3: Capacity-Demand-Diagram (Soil Profile Type S_B)

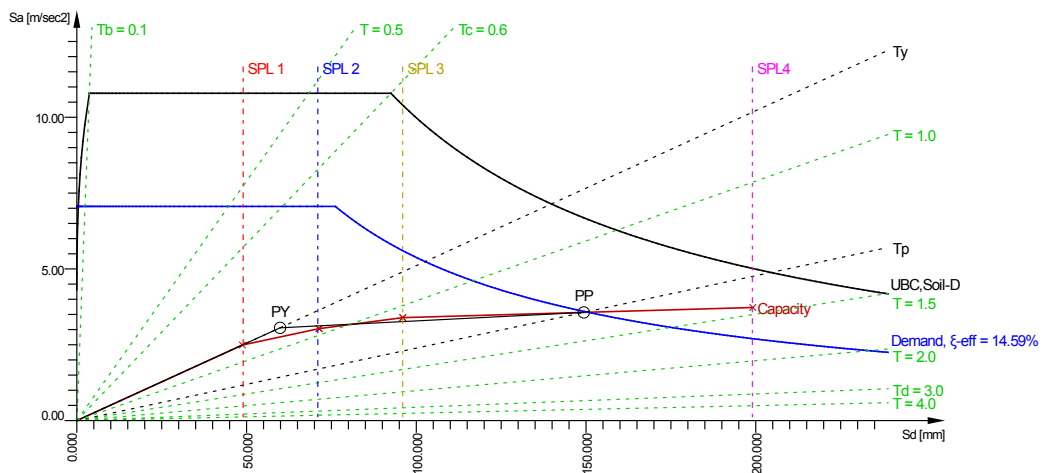


Figure 4: Capacity-Demand-Diagram (Soil Profile Type S_D)

The results of the SOFiSTiK calculation and the comparison with the reference solution are summarized in Table 2.

Table 2: Results

		ξ_{eff}	SR_a	SR_v	S_{dy}	S_{ay}	S_{dp}	S_{ap}
Soil type		[%]	[-]	[-]	[mm]	[m/s ²]	[mm]	[m/s ²]
S_B	SOF.	9.4	0.80	0.84	51.30	2.62	85.04	3.23
	Ref. [1]	9.2	0.80	0.85	53.34	2.65	83.36	3.24
	e [%]	2.2	0.0	1.2	3.8	1.1	2.0	0.3
SOF.		14.6	0.65	0.73	59.86	3.06	149.34	3.57

Table 2: (continued)

Soil type		ξ_{eff}	SR_a	SR_v	S_{dy}	S_{ay}	S_{dp}	S_{ap}
		[%]	[–]	[–]	[mm]	[m/s ²]	[mm]	[m/s ²]
S_D	Ref. [1]	14.2	0.66	0.74	58.42	3.04	149.86	3.63
	e [%]	2.8	1.5	1.4	2.5	0.7	0.3	1.7

ξ_{eff} effective viscous damping of the equivalent linear SDOF system
 SR_a, SR_v spectral reduction factors in constant acceleration and constant velocity range of spectrum
 S_{dy}, S_{ay} spectral displacement and spectral acceleration at yielding point
 S_{dp}, S_{ap} spectral displacement and spectral acceleration at performance point

The results are in excellent agreement with the reference solution. Small differences can mainly be attributed to the approximate nature of the graphical procedure for the bilinear idealization of the capacity used in the reference solution, while the procedure implemented in SOFiLOAD is refrained from such approximation and computes the hysteretic energy directly from the area underneath the capacity curve and the coordinates of the performance point [2]. Apart from that, the performance point displacement tolerance used in SOFiLOAD is lower than the one used in the reference solution (1% compared to 5%).

4 Conclusion

Excellent agreement between the reference and the results computed by SOFiSTiK verifies that the procedure for the calculation of the performance point according to ATC-40 is adequately implemented.

5 Literature

- [1] ATC-40. *Seismic Evaluation and Retrofit of Concrete Buildings*. Applied Technology Council. Redwood City, CA, 1996.
- [2] *SOFiLOAD Manual: Loads and Load Functions*. Version 2018-0. SOFiSTiK AG. Oberschleißheim, Germany, 2017.